

Snake Creek Management Unit

6/02

TRAIL TYPES & DESIGNATIONS

Motorized Trails
 (ATVs/Motorcycles are permitted from May 1 - November 1)
 (Snowmobiles are permitted from December 1 - March 31)

GIA Snowmobile

Non-Motorized Trails
 (Skiing and Hiking permitted)

State Forest Road

TRAIL USES

- S** Snowmobile
- A** ATV
- M** Motorcycle
- W** Walking/Hiking
- X** Cross Country Ski

TRAIL DIFFICULTY RATING

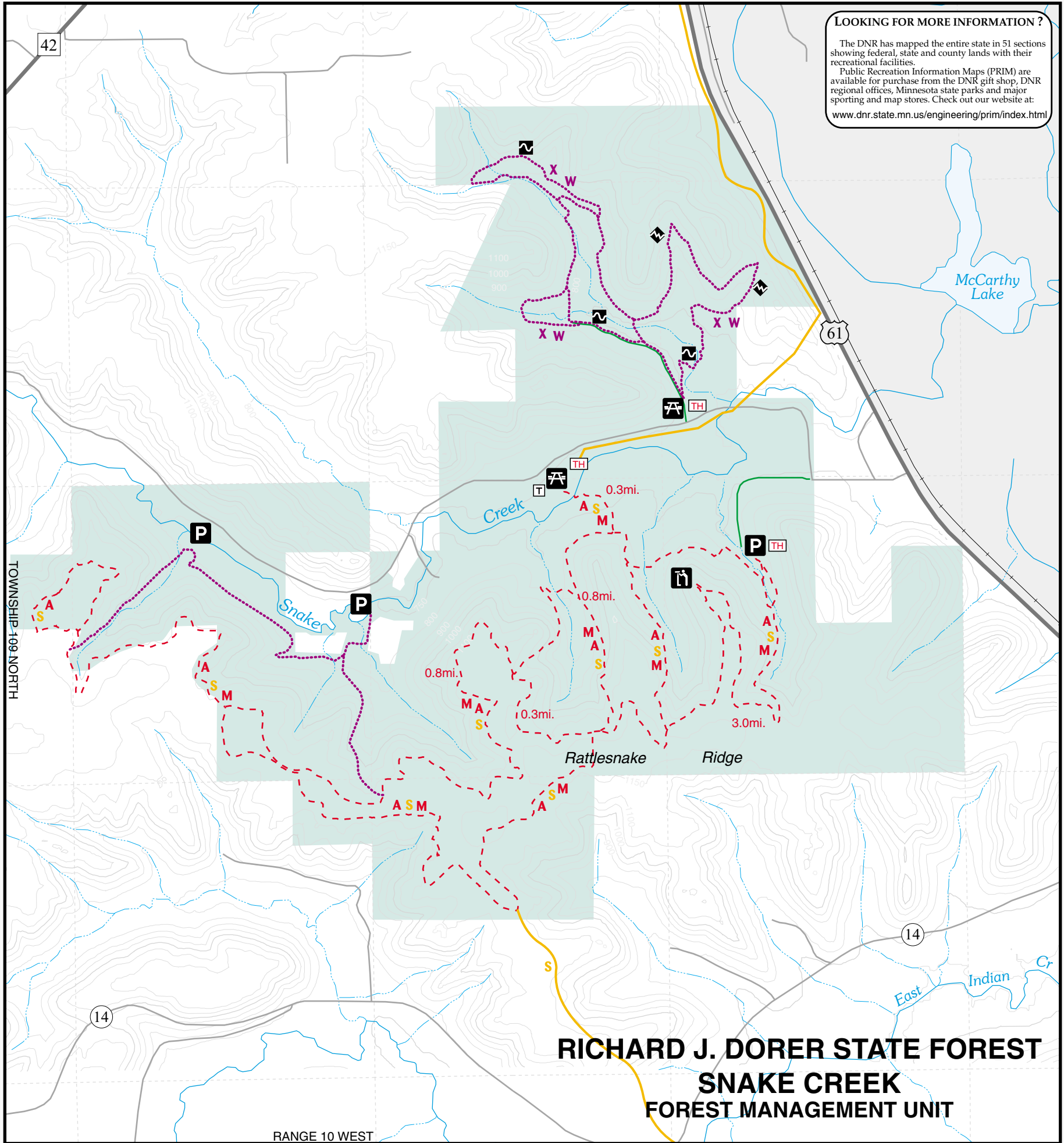
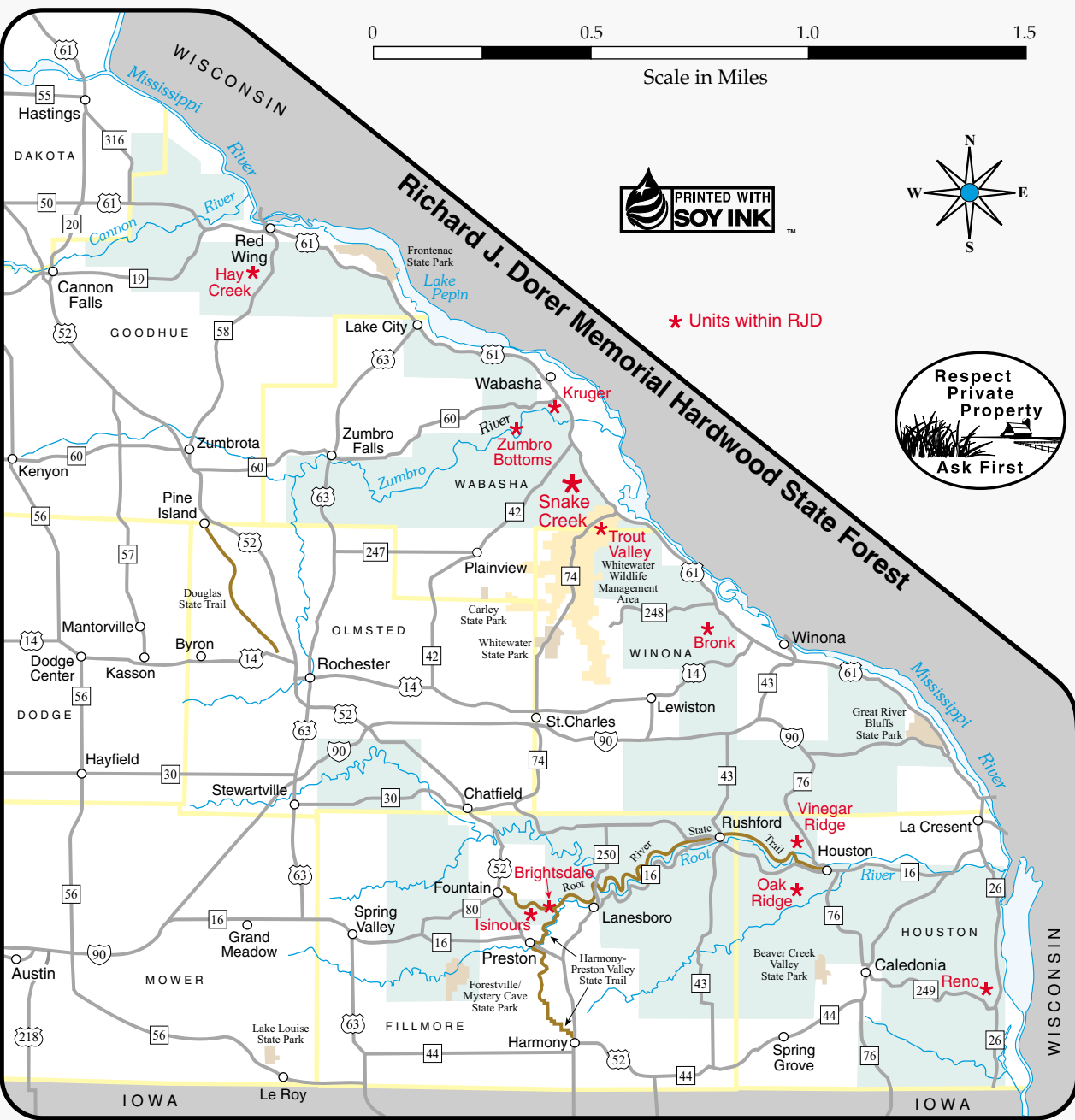
- difficult
- most difficult

FACILITIES

- P** Parking
- Picnic Table, Parking
- Overlook
- Toilet Facilities
- Trail Head

OWNERSHIP

- State Forest Land
- Land outside unit boundaries
- Private land within forest
- State Wildlife Management Area
- State Parks



LOOKING FOR MORE INFORMATION ?

The DNR has mapped the entire state in 51 sections showing federal, state and county lands with their recreational facilities. Public Recreation Information Maps (PRIM) are available for purchase from the DNR gift shop, DNR regional offices, Minnesota state parks and major sporting and map stores. Check out our website at www.dnr.state.mn.us/engineering/prim/index.html

RICHARD J. DORER STATE FOREST SNAKE CREEK FOREST MANAGEMENT UNIT